

## DRAWING

VISUALIZATION

Number:

Scale:

Sheet size:

## PROJECT

SMART ENERGY POINT  
E-MOBILITY

Order:

Stage: STUDY

Date: 03/2014

## GRAFICAL DESIGN

Cubespace s.r.o.

## SUPPLIER

**B64 s.r.o.**

Slezska 12/397, Prague

Seat: Prazska 305, Pisek

Web: [www.b64.cz](http://www.b64.cz)Email: [office@b64.cz](mailto:office@b64.cz)

Tel.: +420 378 606 707

STUDY



## Innovative Solution for Energetics

SEP eliminates the biggest disadvantage of renewable energy sources, which is mismatch between production and consumption. It reduces and harmonizes consumption of individual devices due to its intelligent control. It combines and integrates the latest technologies:

- Vanadium redox batteries as energy storage
- Renewable energy sources
- Possible connection to a grid
- Optimization of consumption / delivery from / to the grid
- Electromobility
- Innovative power management

SEP has positive effect to the following areas:

- **Ecology** – SEP provides additional renewable energy source that does not have negative environment impact. It replaces fossil fuels, has zero CO2 production.
- **Energy safety** – it increases protection against power failure until the start of backup power supplies. As an energy reserve, it stabilizes voltage and frequency, compensates fluctuations and peaks.
- **Savings** – production of electricity from renewable sources, operation of energy efficient devices (Electromobility, LED lighting, etc.). Optimization of appliances.
- **E-mobility** – using ecological energy to drive fleet of electro cars and other machines and devices. Covering of transportation needs of municipalities, hospitals and other entities.
- **Education** – change of understanding and citizens' access to production, using and consumption of energy.

**DRAWING**

GROUND PLAN

Number:  
Scale:  
Sheet size:

**PROJECT**

SMART ENERGY POINT  
E-MOBILITY

Order:  
Stage: STUDY  
Date: 03/2014

**GRAFICAL DESIGN**

Cubespace s.r.o.

**SUPPLIER**



**B64 s.r.o.**  
Slezska 12/397, Prague  
Seat: Prazska 305, Pisek  
Web: www.b64.cz  
Email: office@b64.cz  
Tel.: +420 378 606 707

**SMART ENERGY POINT  
E - MOBILITY**

**DRAWING**  
GROUND PLAN  
Number:  
Scale:  
Sheet size:

**PROJECT**  
SMART ENERGY POINT  
E-MOBILITY

Order:  
Stage: STUDY  
Date: 03/2014

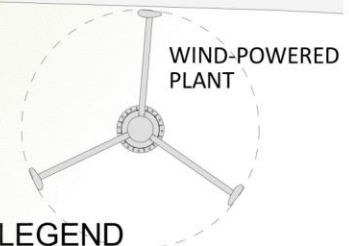
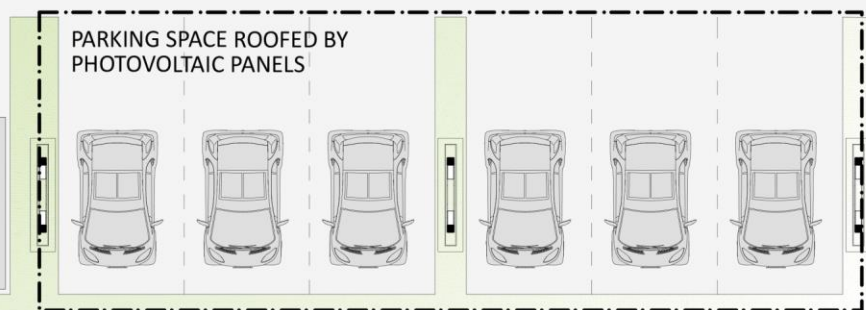
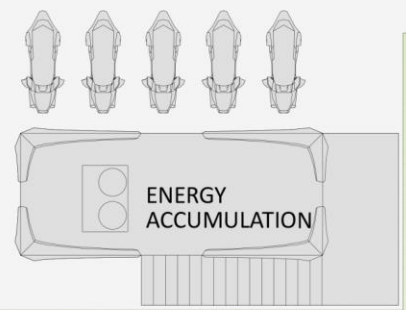
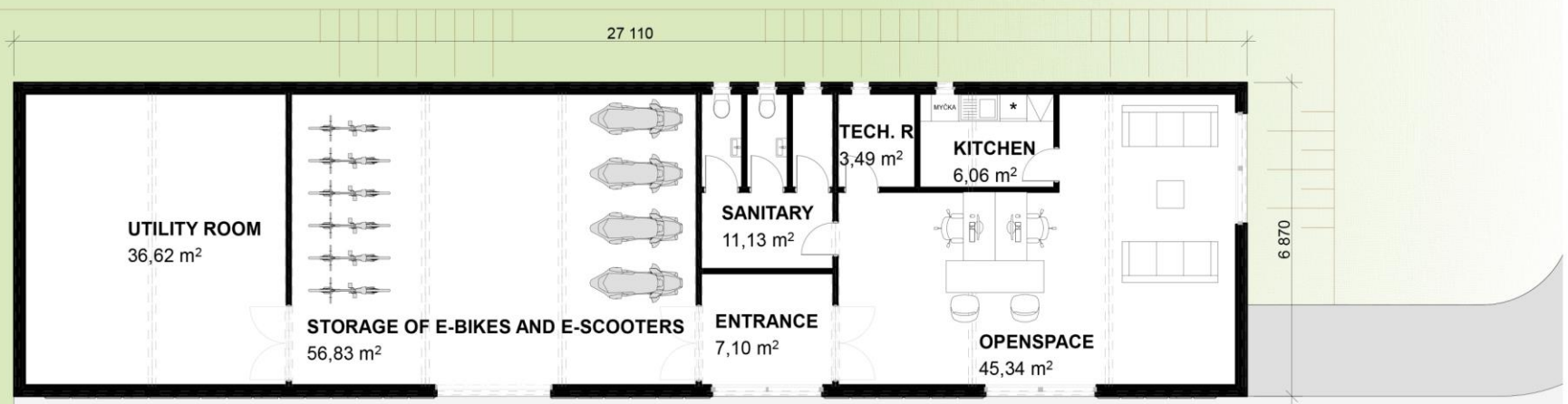
**GRAFICAL DESIGN**

Cubespace s.r.o.

**SUPPLIER**



**B64 s.r.o.**  
Slezska 12/397, Prague  
Seat: Prazska 305, Pisek  
Web: www.b64.cz  
Email: office@b64.cz  
Tel.: +420 378 606 707



- LEGEND**
- DESIGNED CONSTRUCTIONS
  - EXISTING CONSTRUCTIONS
  - ROAD
  - PAVEMENT
  - GRASS AREA
  - TERRAIN BRAKE
  - ENTRANCE

**GROUND PLAN**



The station uses different renewable sources to ensure operation of a fleet of electro-cars, electro-scooters, electro-bikes and other technologies. It works in off-grid or semi off-grid mode.

## DRAWING

VISUALIZATION

Number:  
Scale:  
Sheet size:

## PROJECT

SMART ENERGY POINT  
E-MOBILITYOrder:  
Stage: STUDY  
Date: 03/2014

## GRAFICAL DESIGN

Cubespace s.r.o.

## SUPPLIER



## B64 s.r.o.

Slezska 12/397, Prague  
Seat: Prazska 305, Pisek  
Web: www.b64.cz  
Email: office@b64.cz  
Tel.: +420 378 606 707





Power of the storage system of electrical energy (flow battery) makes rapid charging of vehicles possible.

Revolutionary technology of vanadium redox flow battery allows practically unlimited number of charging and discharging cycles without capacity loss.

**DRAWING**

**VISUALIZATION**

Number:  
Scale:  
Sheet size:

**PROJECT**

**SMART ENERGY POINT  
E-MOBILITY**

Order:  
Stage: STUDY  
Date: 03/2014

**GRAFICAL DESIGN**

Cubespace s.r.o.

**SUPPLIER**



**B64 s.r.o.**

Slezska 12/397, Prague  
Seat: Prazska 305, Pisek  
Web: www.b64.cz  
Email: office@b64.cz  
Tel.: +420 378 606 707



The flow battery creates a steady and stable energetic basis from so far irregular solar and wind source energy.

The system is modular and thus very flexible.

**DRAWING**

VISUALIZATION

Number:  
Scale:  
Sheet size:

**PROJECT**

SMART ENERGY POINT  
E-MOBILITY

Order:  
Stage: STUDY  
Date: 03/2014

**GRAFICAL DESIGN**

Cubespace s.r.o.

**SUPPLIER**



**B64 s.r.o.**  
Slezska 12/397, Prague  
Seat: Prazska 305, Pisek  
Web: www.b64.cz  
Email: office@b64.cz  
Tel.: +420 378 606 707