

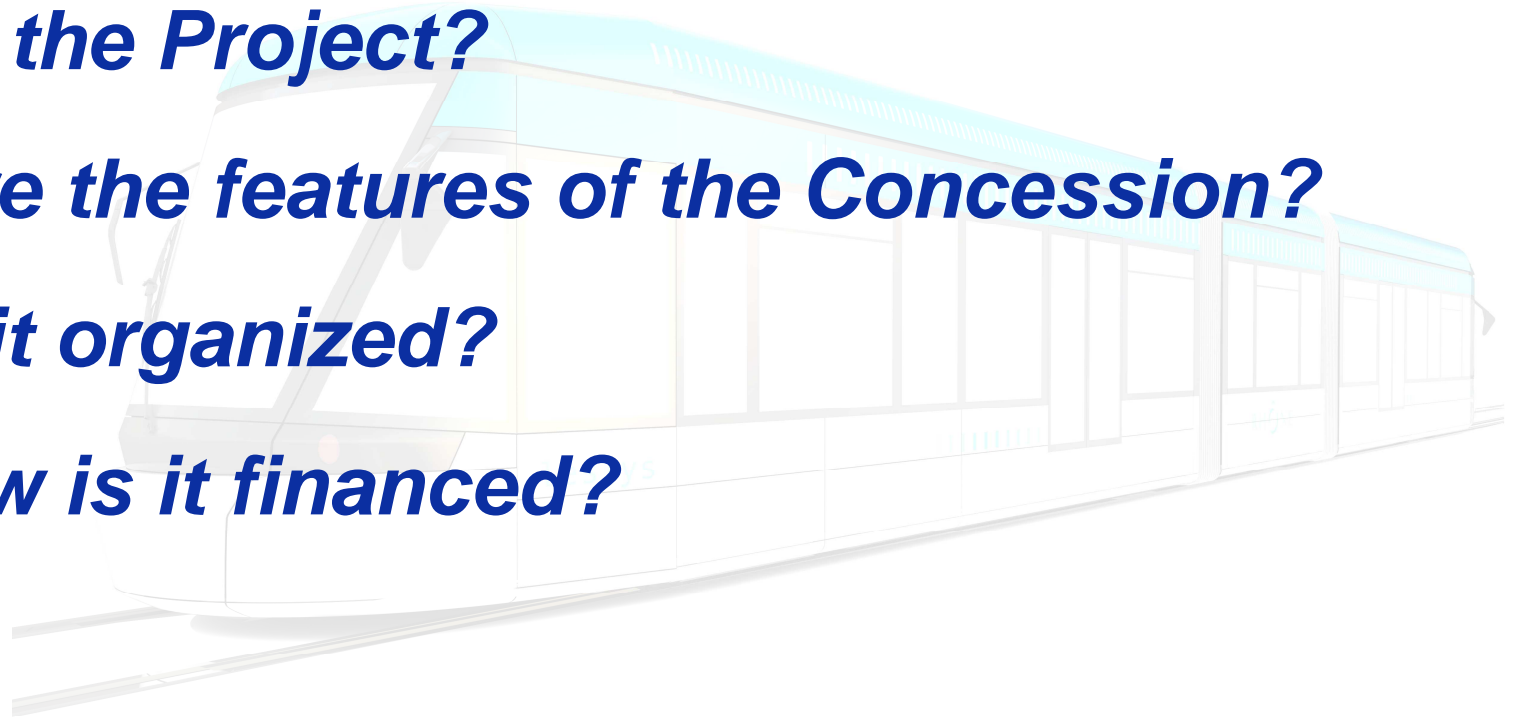
LESLYS PROJECT



A Concession for an Express LRT in FRANCE



- ***What is the Project?***
- ***What are the features of the Concession?***
- ***How is it organized?***
- ***And how is it financed?***



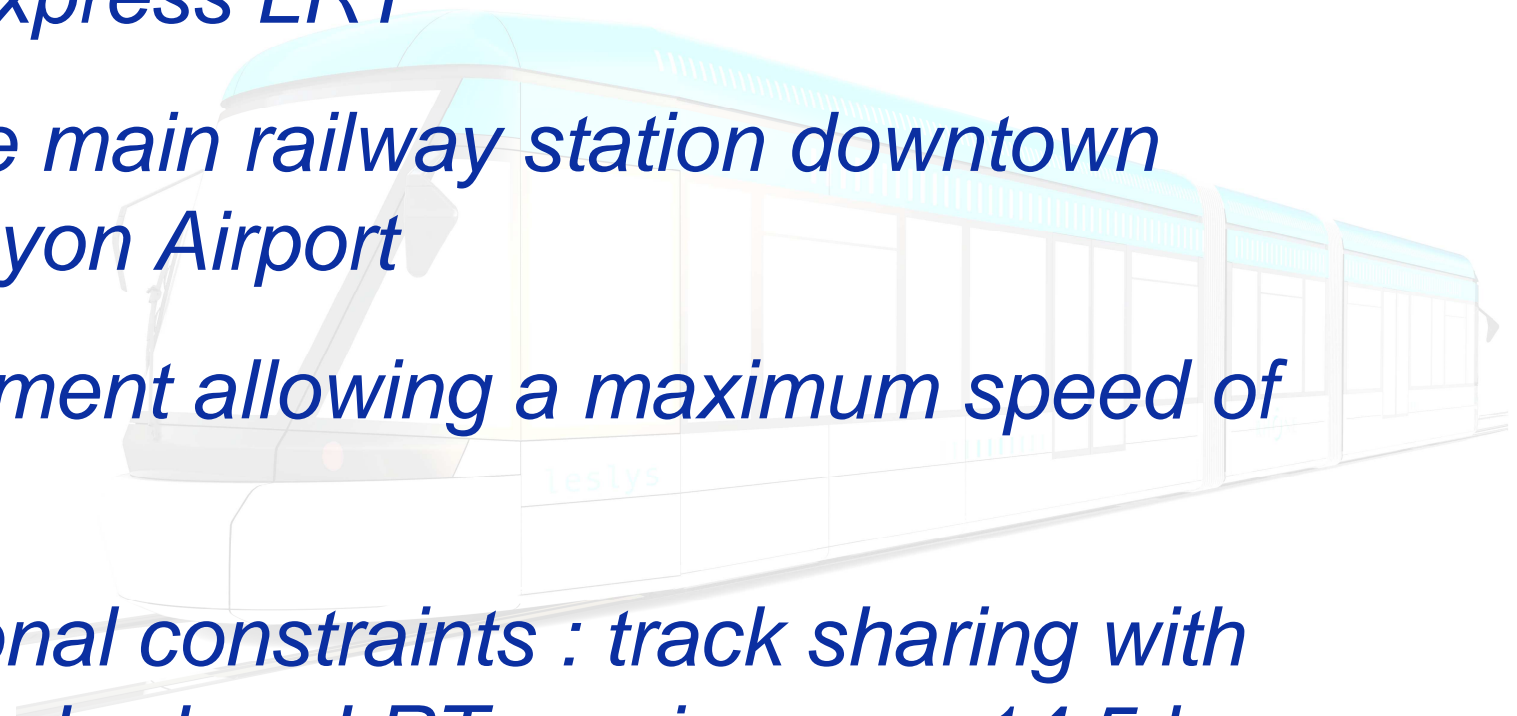
RHONEXPRESS



leslys
Lyon centre < > Aéroport

THE PROJECT

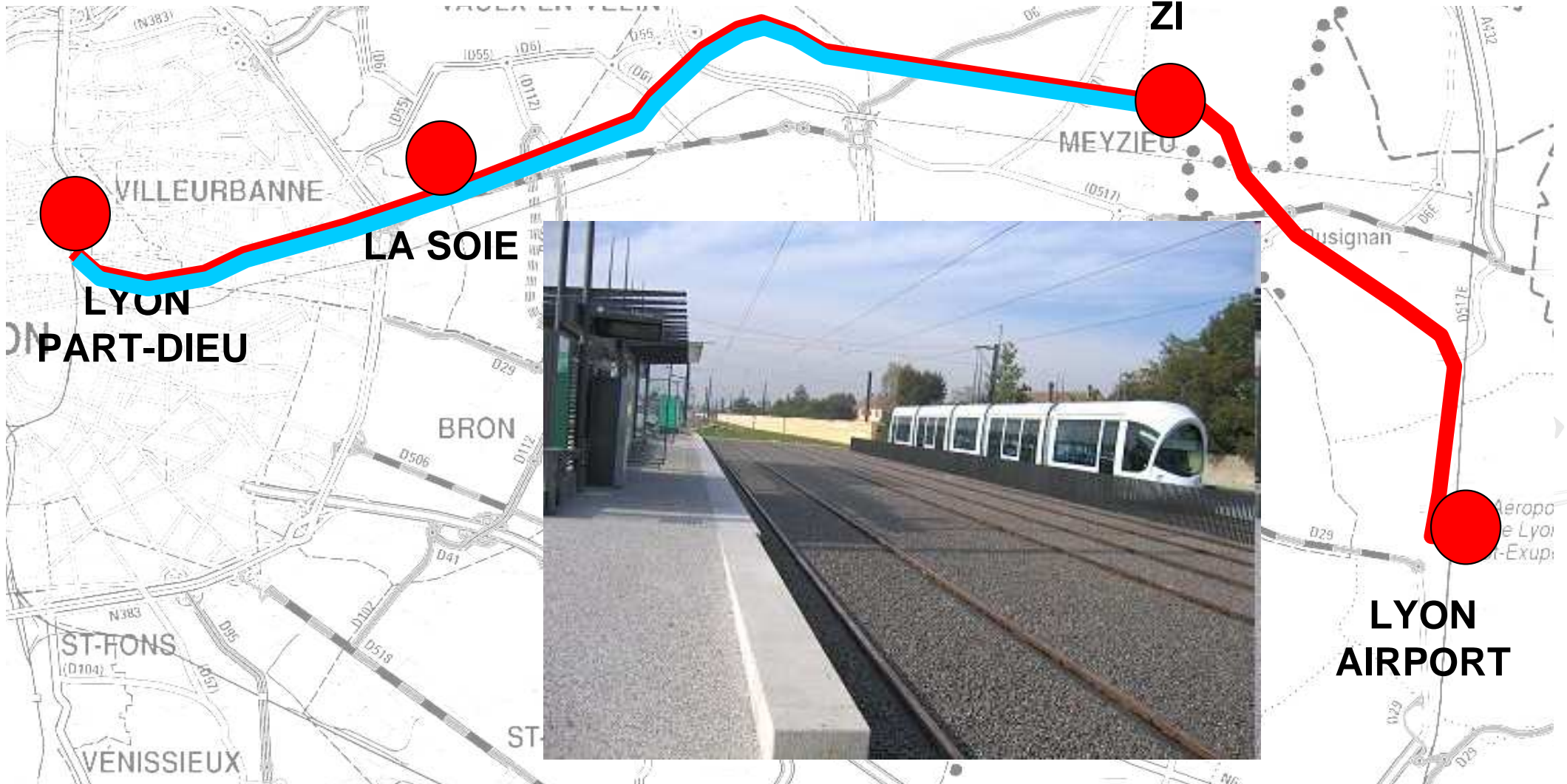
- *22 km Express LRT*
- *From the main railway station downtown Lyon to Lyon Airport*
- *An alignment allowing a maximum speed of 100 kph*
- *Operational constraints : track sharing with existing suburban LRT service over 14,5 kms*



RHONEXPRESS

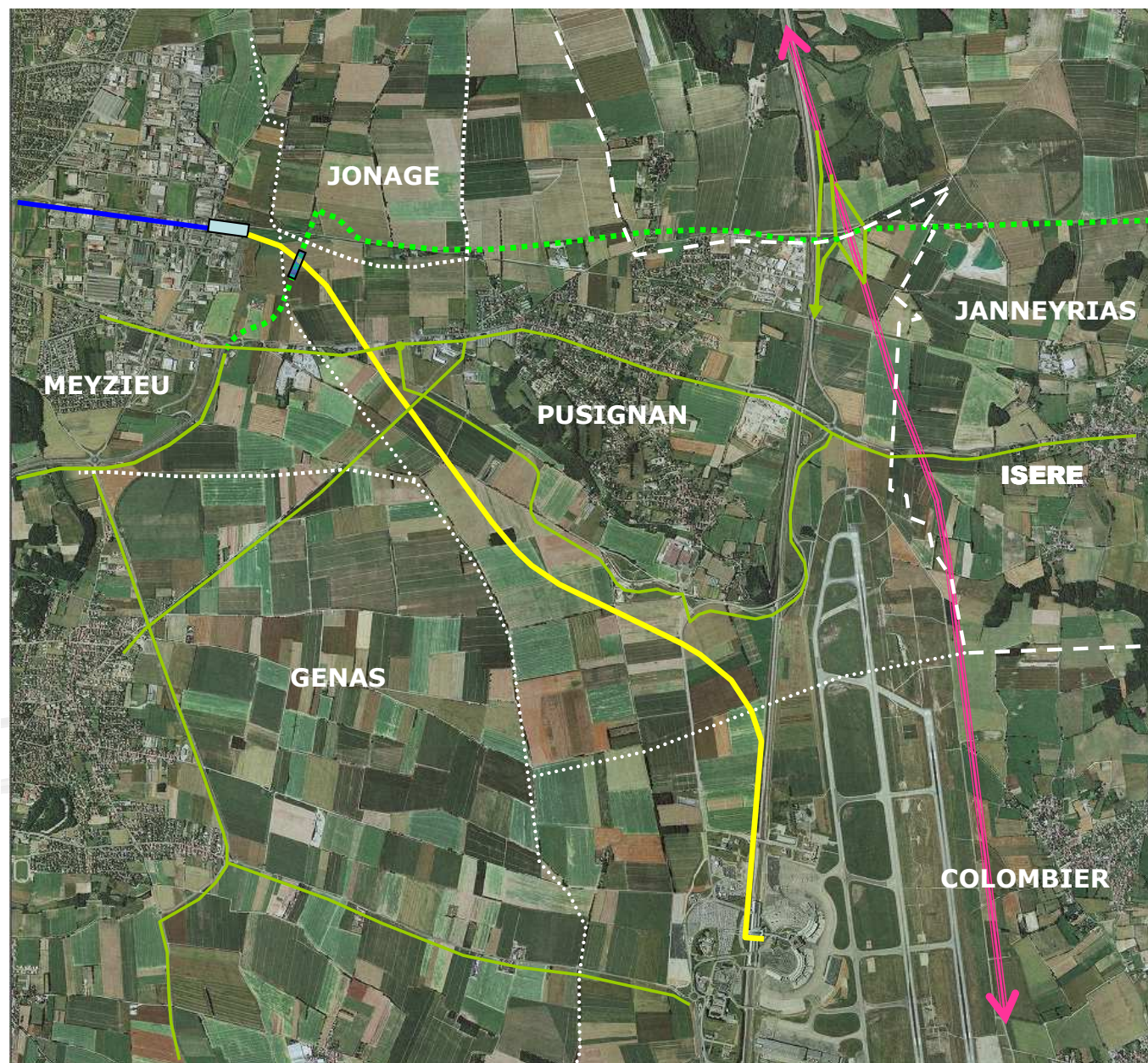
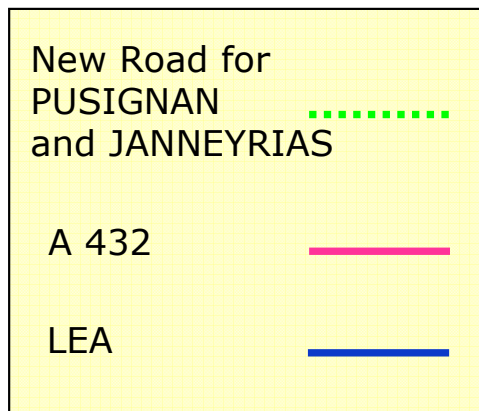


leslys
Lyon centre < > Aéroport



 LEA, URBAN LRT: 14.5 km  LESLYS, EXPRESS LRT: 22km





TB2

TB1

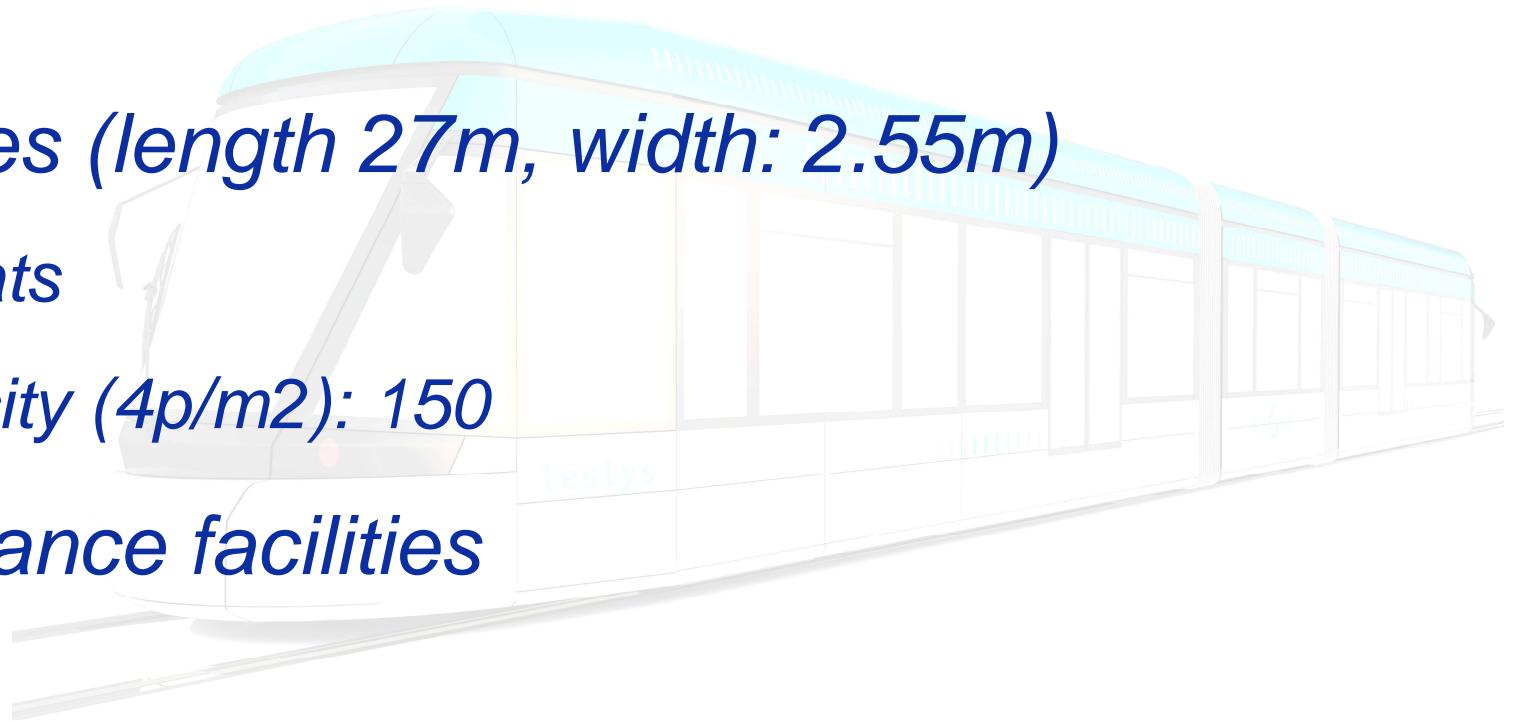
**LRT
Station at
Airport**

HSL Station



ROLLING STOCK and maintenance facilities

- *6 vehicles (length 27m, width: 2.55m)*
 - *76 seats*
 - *Capacity (4p/m²): 150*
- *Maintenance facilities*



RHONEXPRESS



leslys
Lyon centre < > Aéroport



Rolling Stock: TANGO of STADLER





RHONEXPRESS



leslys
Lyon centre < > Aéroport



RHONEXPRESS



leslys
Lyon centre < > Aéroport

OPERATION PERFORMANCES

- *Service between 5h00 and 24h00*
- *Headway : 15mn*
- *Client Attendance on board the vehicles*
- *Trip time: 25 mn between Airport and center of Lyon*
- *Ticket cost (median): 12€*
- *Target: 1M passengers per year in 2012*



THE CONCESSION FEATURES

- *Design Build Finance and Operate*
- *Includes Infrastructure and Rolling Stock*
- *30 years from Statutory Approval of Project*
- *Time schedule:*
 - *Contract signature: 8/1/2007*
 - *Statutory Approval of Project: 10/7/2008*
 - *Start of commercial operation: August 2010*
- *All risks passed to Concessionnaire*

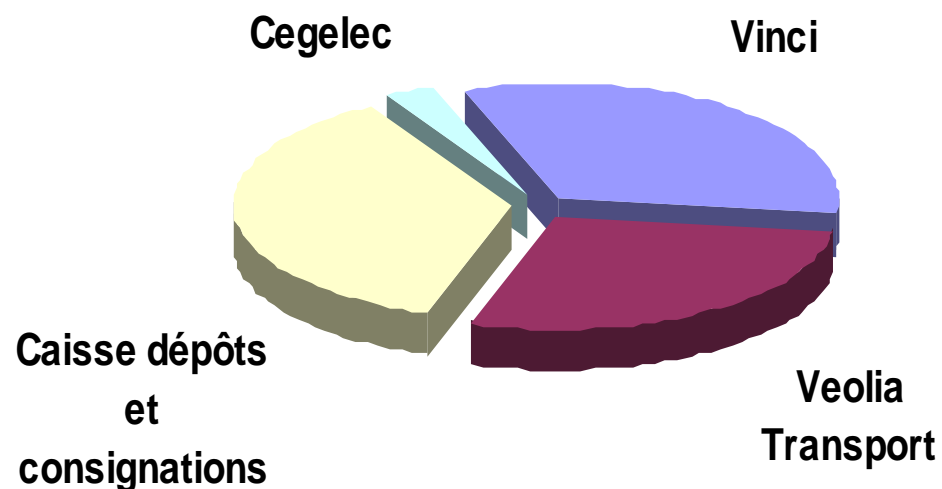
RHONEXPRESS



leslys
Lyon centre < > Aéroport

Public Authority: Rhône County Council

CONCESSIONNAIRE: RHONEXPRESS



*Rhonexpress
Shareholders:*

CDC: 36.6 %

VINCI: 32.4 %

VEOLIA: 28.2 %

CEGELEC: 2.8 %

RHONEXPRESS



leslys
Lyon centre < > Aéroport

ORGANISATION

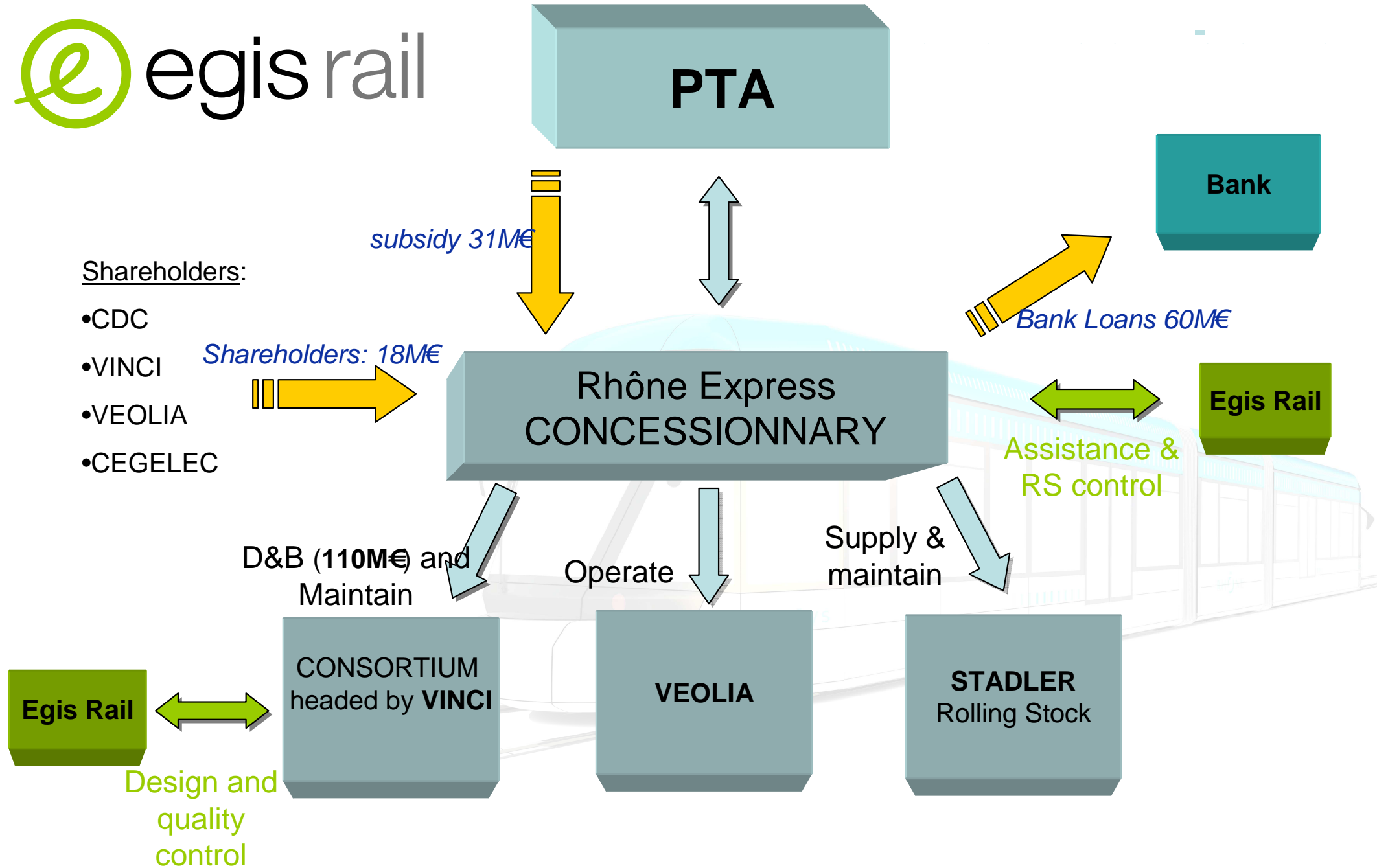
RHONEXPRESS: Dedicated company as Concessionnaire and RS owner

- *CDC: Equity holder*
- *VINCI: Major D&B contractor with its local branches*
- *VEOLIA: Operator*
- *CEGELEC: Minor contractor*
- ***Egis Rail: Engineer for infrastructure and rolling stock***
- *Stadler: RS provider*

RHONEXPRESS



leslys
Lyon centre < > Aéroport



RHONEXPRESS



leslys
Lyon centre < > Aéroport

FINANCIAL INFORMATION

- *FOR CONSTRUCTION : 110 M€*
 - *Shareholders: 18M€*
 - *Lenders to Rhonexpress: 60M€*
 - *Public subsidy: 31M€*
- *FOR OPERATION & MAINTENANCE*
 - *Yearly operation subsidy: 3.5M€*
 - *Revenues from users to Rhonexpress : 12M€ forecast*
- *All risks to Concessionnaire:*
 - *Construction / Operation / Commercial*

RHONEXPRESS



leslys
Lyon centre < > Aéroport